
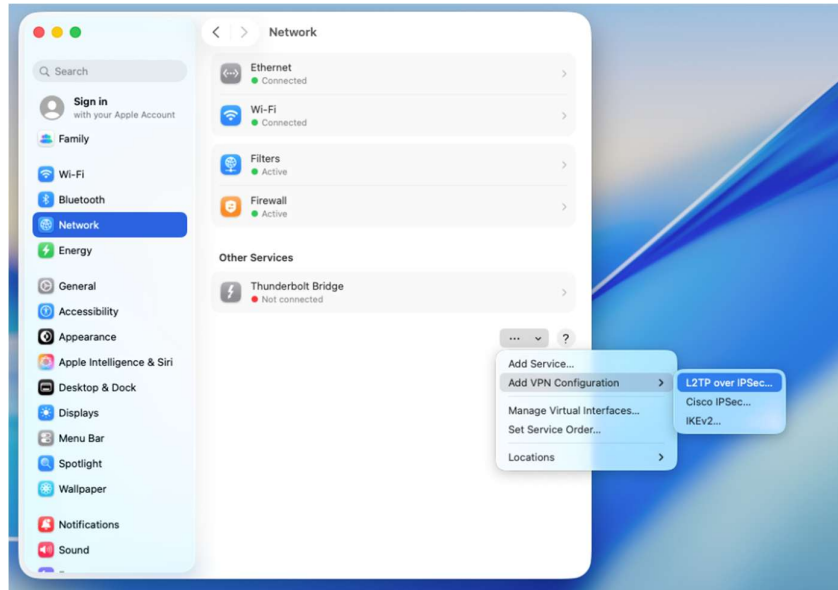
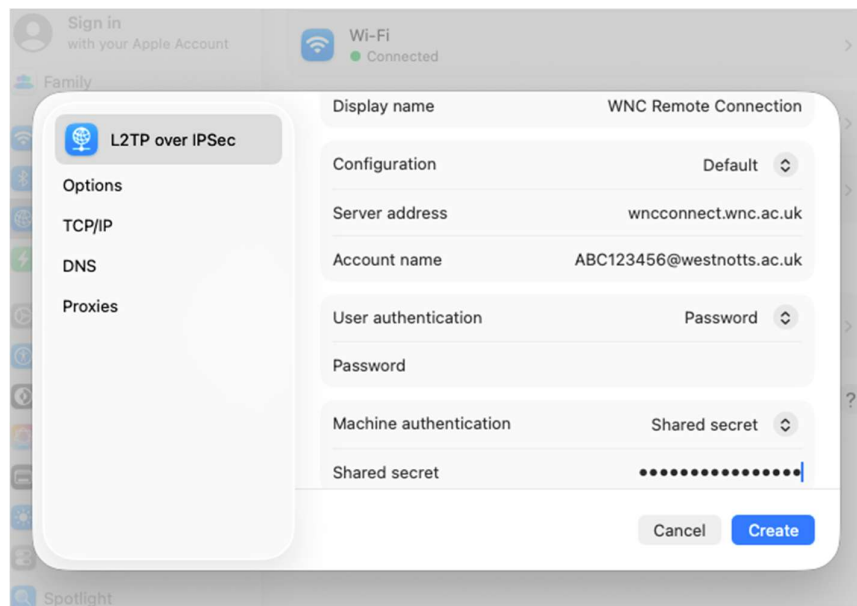


Setting up the college VPN on a Mac (macOS 26+)

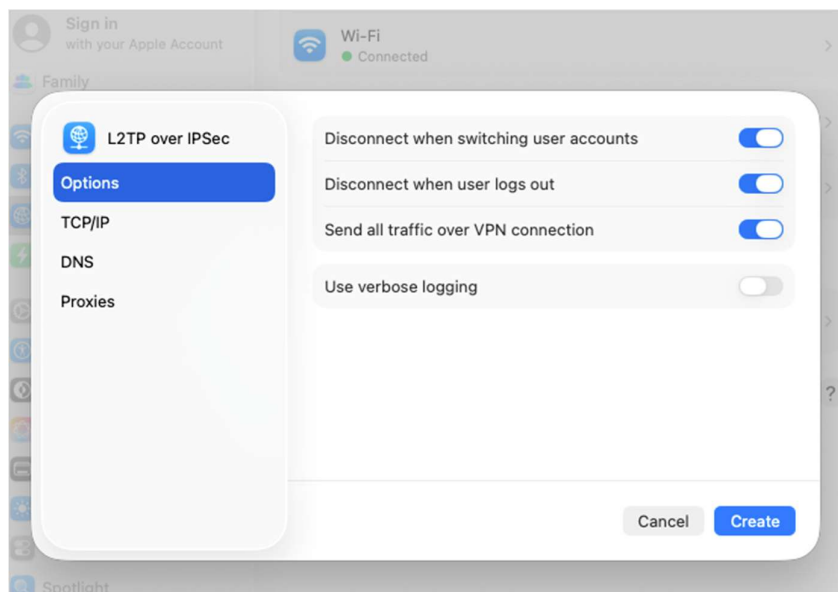
1. On your Mac, choose the Apple menu  then System Settings then click Network.
2. From the dropdown box at the bottom, click the pop-up menu, choose Add VPN Configuration and choose L2TP over IPSec.



3. Give the VPN a relevant Display name e.g. WNC Remote Connection.
4. Configuration leave as "Default".
5. Under Server Address enter - wncconnect.wnc.ac.uk
6. Under account name enter your idnumber@westnotts.ac.uk e.g. abc123456@westnotts.ac.uk
7. Scroll down and under Shared Secret enter – baseabledarerock

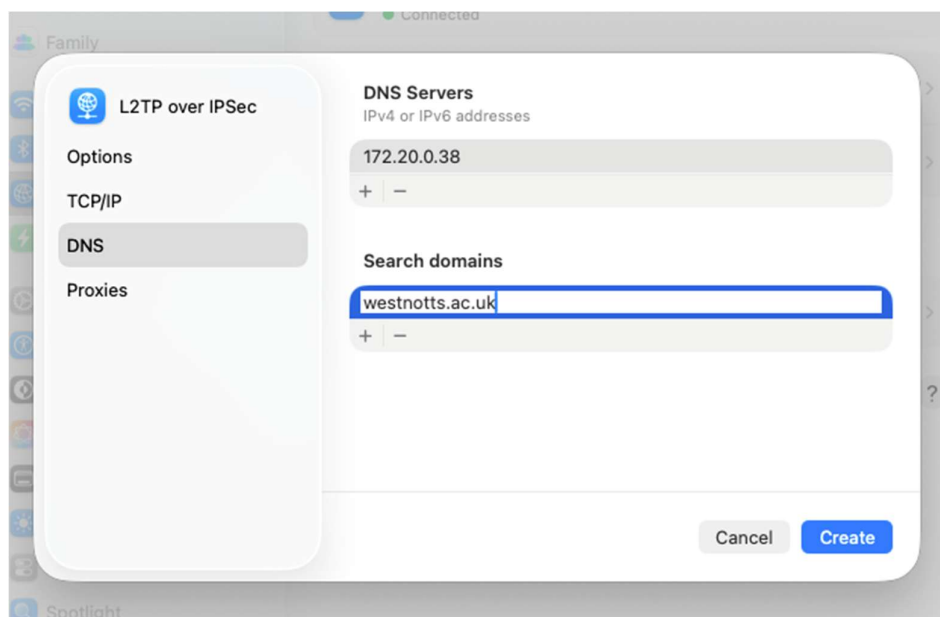


8. Click Options on the left and select Send all traffic over VPN connection.



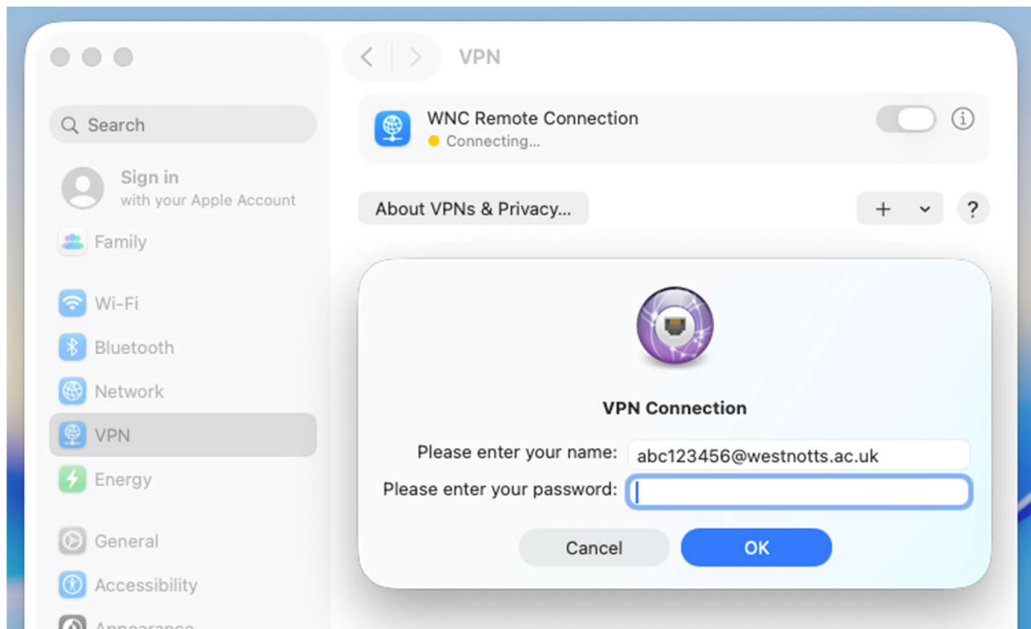
9. Click DNS then click the Add button + under DNS Servers and enter - 172.20.0.38

10. Click the Add button + under Search Domains and enter - westnotts.ac.uk



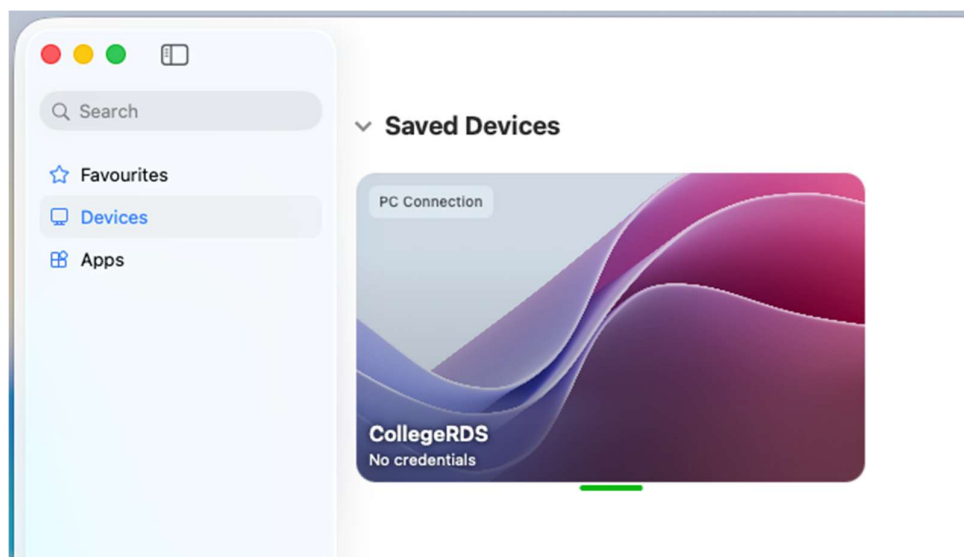
11. Click Create at the bottom.

12. Select VPN from the left hand menu bar in System Settings and the WNC VPN you have just created and toggle it to On. You should be prompted for your usual college password which you will need to enter. You will then need to check the AD Selfservice app on your phone to accept the push notification to complete the connection. Instructions on setting this up if you haven't already are at the end of this document.



13. To use remote desktop to open up a virtual College Windows environment (like using an on-site computer), download the "Windows App" from the Mac App Store and then drag the CollegeRDS.rdp file from the college website [here](#) into it.
14. Open up the CollegeRDS connection in Windows App and log in when prompted. For your username, you should enter it as follows: **idnumber@westnotts.ac.uk**; for instance, if your college username is **abc123456** then you should enter **abc123456@westnotts.ac.uk**.

Your password is the same as your normal college password.



15. After a short while a full-screen virtual Windows environment should open on your Mac and allow you full access to internal college systems as though you are using a college computer on-site.

REMEMBER TO DISCONNECT (UNTOGGLE) the VPN connection when you are finished with your work session.

Please be aware that to use the following resources you do **NOT** need the remote connection - they are available directly on the Internet:

- [Moodle](#)
- [OneFile](#)
- [Office 365](#)
- [Planet eStream](#)
- [LRC Online](#)
- [Staff Essential Training](#)

If you have any problems accessing the VPN, please contact the [IT Helpdesk](#).

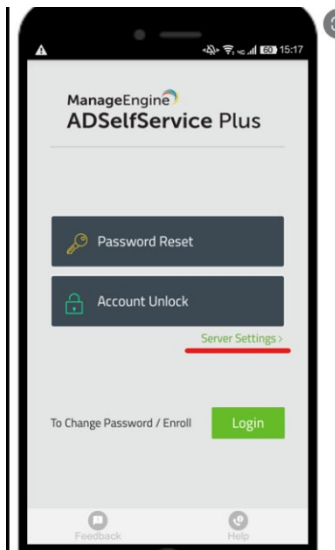
AD self-service plus app – required for vpn

Setting up the app

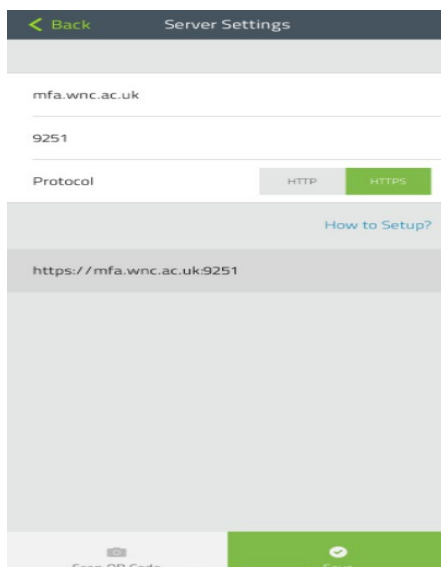
1. On your mobile device download the **AD Self Service plus** app from your device's app store



2. Select server settings.



3. Enter settings as below and select save



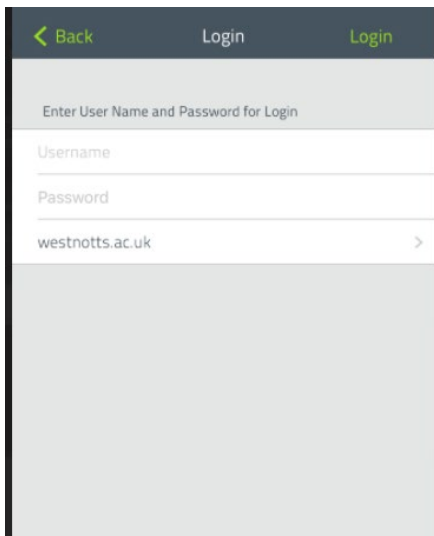
Web Address = mfa.wnc.ac.uk

Port = 9251

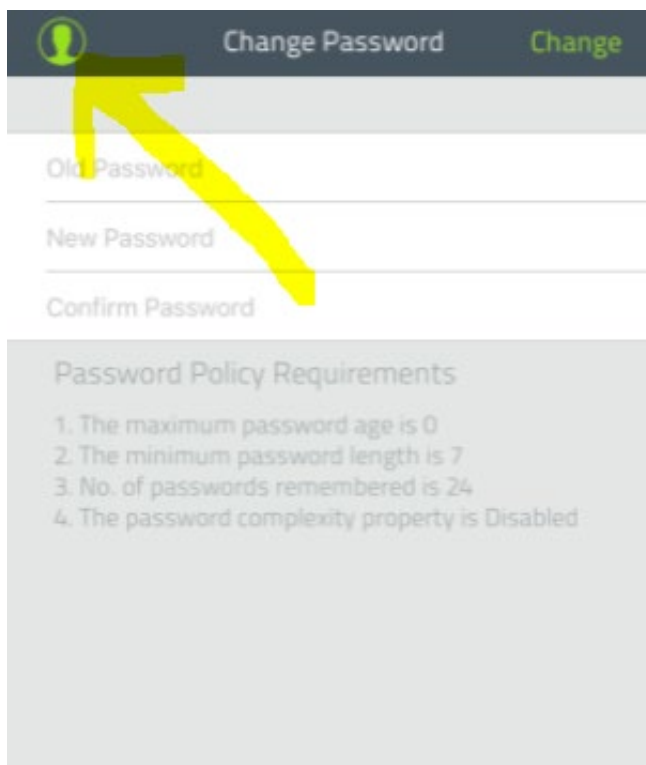
Protocol = HTTPS (Should be highlighted Green)

Tap Ping to test connection – Then **Save** once successful

4. Next select **Login** and enter your usual college username and password. If you have another enrolment method set-up e.g. Microsoft Authenticator, you maybe asked to enter this code also.

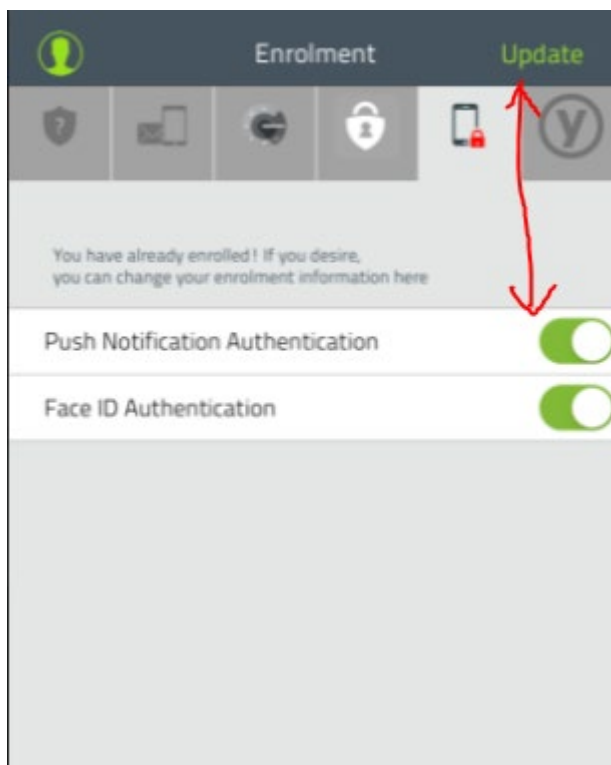


5. Once logged in you will see a Change Password screen. You **do not** need to change password – just tap the face icon in the top left corner and select Enrolment.





Once on this screen select the mobile and padlock icon, you might see more icons than this screen shot, **turn on push notification** and select **update** on the top right.



6. After this you can close the app.

Using the VPN

No changes need to be made to the vpn settings on your pc.

When connecting to the vpn and putting in your username and password there will be a pause on screen, during this time your device should give you a push notification to accept onscreen on the mobile device. Do not accept this notification if you are not trying to log in.

Once you accept your computer will complete the vpn sign in and you will be able to work as normal.